

#52b Trek to Matheran via Rambaug point

A Season of Mountains – Sahyadris

Where: Matheran via Rambaug Point

USP: One of the lesser known trails to Matheran

Type: Hill trek

Base Village: Pokharwadi

Range: Matheran

Region: Karjat

Nearest railway station: Karjat - 9 km

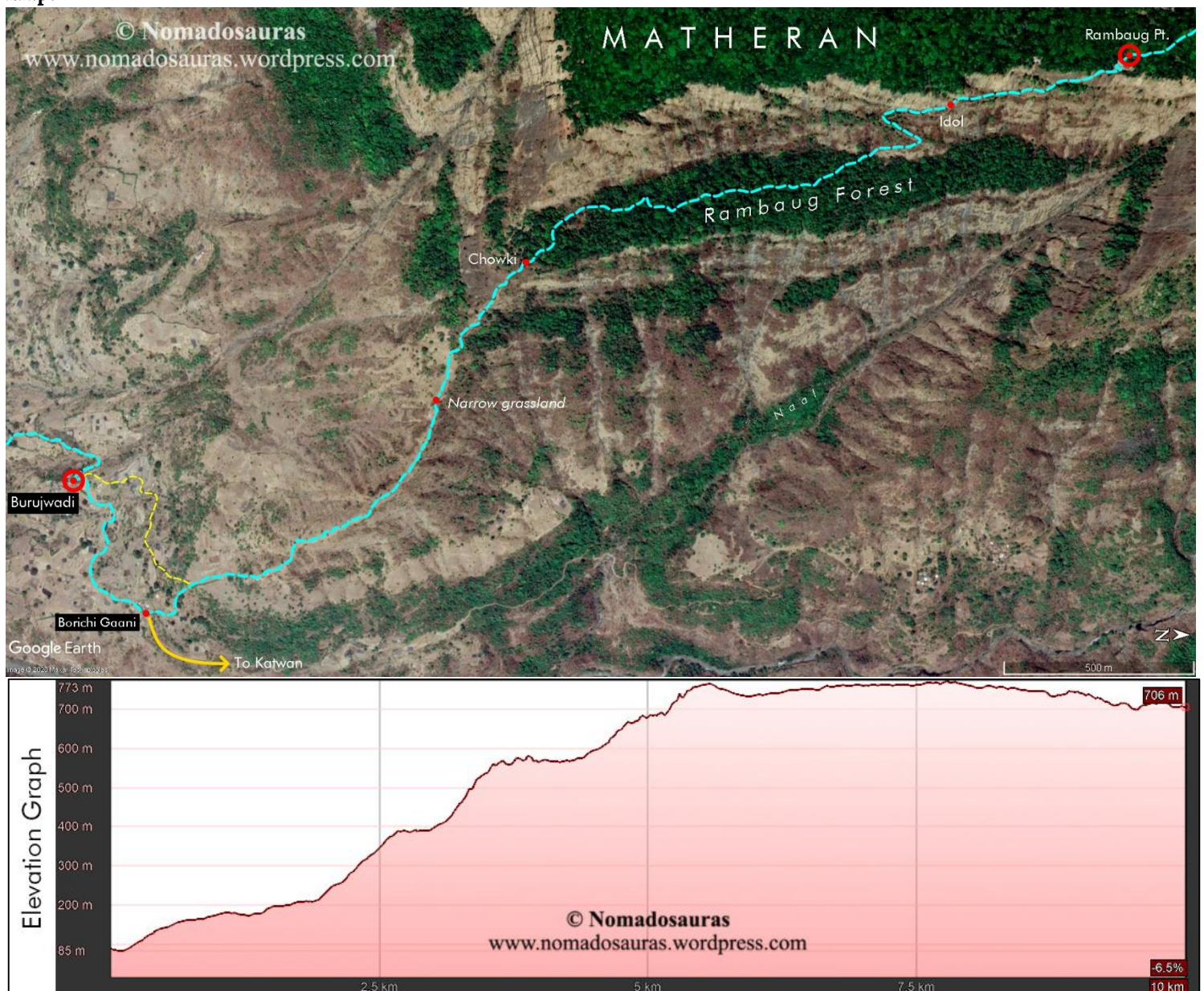
Best time to visit: Monsoon (July-September) & Winter (November-February)

Difficulty: Easy; Beginners can comfortably attempt these treks.

Endurance: 3; Medium distance trek with moderate elevation gain & loss.

Risk Factor: Low

Map:



#52b Trek to Matheran via Rambaug Point

A Season of Mountains – Sahyadris

Route: Karjat – Pokharwadi – Burujwadi- Rambaug Point- Matheran- Dasturi Naka

Total distance: Approx. 11 km **Total time:** 6-7 hours

Max. Elevation of the trek: 2637 ft/804 m above MSL

Min. Elevation of the trek: 276 ft/86 m above MSL

Total Elevation Gain: Approx. 3075 ft.

GPS trail link: Wikiloc & Ramblr link.

How to reach Pokharwadi using Public transport:

From Mumbai, board any Karjat/Khopoli bound local train and alight at Karjat. You can also travel by any Pune-bound Express with a scheduled halt at Karjat.

From Karjat East, hire a cab or a 6-seater auto (locally known as TumTum) for Pokharwadi. One way fare is usually between ₹ 250 to 400 depending on the day of the week (weekends see greater footfall and consequently, higher prices) and your bargaining skills.

Alternatively, you can board any Panvel/Chouk/Rasayani/Murbad bound ST bus/sharing TumTum and alight at Borgaon phata. This will cost you ₹15 per seat. From Borgaon Phata, it's a 4 km walk along the metalled road, passing by the scenic Morbe Dam.

Note: There is no direct bus service (as of 2020) for Pokharwadi village from Karjat ST stand.

Directions from base village: From Pokharwadi, walk past the concrete bridge over Katwan stream and climb up a trail on your right side. The trail merges with a *kuccha* road that leads to Burujwadi. A trail originates from the paddy fields opposite wadi and joins the Borichi Gaani trail at the base of Rambaug spur. Turn left and climb along the spur to reach Chowki, a tiled bench on the periphery of Rambaug fort. From Chowki, the trail cuts through dense forest to gently climb up the Rambaug cliff and end at the Rambaug point viewing gallery. You can board a narrow gauge train for Aman Lodge from Matheran or walk all the way to Dasturi Naka (approx. 5 km) from Rambaug Point.

Approximate timeline

Pokhrwadi to Burujwadi:	30 mins
Burujwadi to Chowki:	1.5-2 hours
Chowki to Rambaug Point:	1.5 hours
Rambaug Point to Dasturi Naka:	1.5 hours

Food and Water: Food and water is available at Pokharwadi & Matheran. Purify water before drinking from Natural sources.

Accommodation: Accommodation can be arranged in Pokharwadi & Matheran.

For complete walkthrough of the trek with annotated pictures & maps, visit:

<https://nomadosauras.wordpress.com/2020/08/16/matheran-rambaug-point-trek-blog/>

Note: The data provided in this post is for informational purposes only. Any reliance you place on such information is therefore, strictly at your own risk.
